



**LOIP
Schenk Air
Ischgl Idalpe**

Tyrol

Version 1.0

by oe3gsu



Austrian X-Plane Design Group

Content:

1. The Original	3
2. The scenery	4
3. Functions (summary)	5
4. Installation	5
5. Recommended settings	5
6. Required Software	5
7. Used Libraries	6
8. Recommended addons	6
9. Credits	6
10. Betatester-Team	6
11. License terms	7

Austrian X-Plane Design Group

1. The Original

The SchenkAIR GmbH was founded by Dr. Christian Schenk (Specialist in trauma surgery) and is now one of the most innovative airlines in Austria. SchenkAir currently operates two modern helicopters of the type 'Agusta Westland AW 109 SP'.

Our commitment applies primarily to the well-being and the satisfaction of our customers and patients. Excellent safety, top quality and friendly customer service are self-evident.

SchenkAir is a partner company from 'Sanatorium Dr. Schenk' in Schruns which is one of Europe's most recognized specialty hospitals focusing on sports injuries. The latest medical equipment and diagnostics such as MRI guarantee an absolutely efficient treatment.

Each year, Dr. Schenk and his team about 2,000 patients operated on, which are around 400 flown by emergency helicopter. Since the existence of sanatorium, the number of operated patients amounts to more than 34,000.



Homebase LOIP

The Ambulance Helicopter 'Robin 3' is in the middle of one of the largest and most modern ski resorts in Europe - stationed (daily up to 20,000 skiers) of the Silvretta Arena Ischgl / Samnaun.

FACT's

- 238 well-groomed slopes
- 44 modern cable cars and lifts
- 1,100 snow machines
- 88,900 persons Total capacity / hour
- Ambulance Helicopter in the ski resort

The piste rescuers Silvrettaseilbahn AG work 'hand in hand' with the team of 'Robin3' together. Casualty or diseased skiers thereby helped quickly and efficiently.

Directly on Dr. Schenk Heliport has set up a modern medical center.

Commitment of 'Robin 3': the end of November to early May

(Source: <http://www.schenkair.com/unternehmen/>)

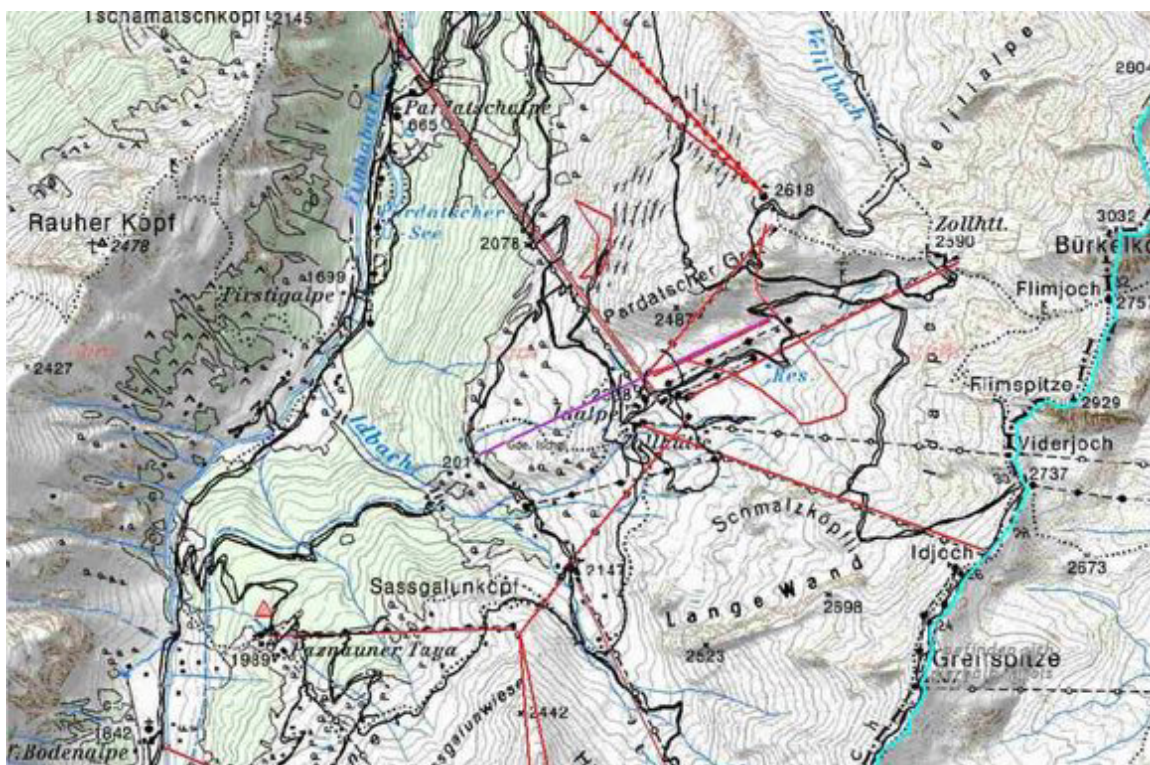
Austrian X-Plane Design Group

2. The scenery

The scene is based on publicly available information and pictures made by our user Philipp, thanks!

The scenery includes night textures and realistic lighting (Only X-Plane 10).

Charts



Frequency	121,175
Radio channel/ Callname	Heliport Ischgl Idalpe
Special procedures	no
Approach from	west, north
Departure direction	west, north

(Source: <http://old.helipad.org/app/default.asp?padId=494>,
<http://www.schenkair.com/unternehmen/heliports/ischgl-loip/>)



Austrian X-Plane Design Group

3. Functions (summary)

- Photorealistic Scenery
- Compatibel to OSM+autogen V6.0 from PliotBalu
- realistic ground textures at the Heliport and the surrounding
- Parkpositions conform to the charts
- realistic lighting of the Helipad
- realistic Markings at the Heliport and the apron
- nighttextures
- realistic lighting *)

*) X-Plane 10+ only!

4. Installation

Just copy the folder " LOIP Idalpe 1.0" in the compressed file after unpacking in the "Custom Scenery" - folder.

directory structure:

```
<X-Plane-Verzeichnis>/
  Custom Scenery /
    LOIP Idalpe 1.0/
      Earth nav data and others)
```

and restart X-Plane.

5. Recommended settings

To visualize all light effects, HDR should be activated. The higher the settings for "texture resolution" and "airport detail" the better the quality of the scenery but the more affect on the FPS ratio.

"runways follow terrain contours" has to be OFF!

6. Required Software

X-Plane® Version 10.30+ or 9.7



Austrian X-Plane Design Group

7. Used Libraries

none

8. Recommended addons

Although the scenery will work without any addons, we recommend to use the following ones for the whole experience (pictures taken with addons installed):

OSM Europe osm+autogen by PilotBalu,

Download: http://simheaven.com/?page_id=23

to have streets and buildings from OSM and autogen where is no coverage of such data.

or

Osm Austria beta6.0 by PilotBalu

Download: <http://simheaven.com/experimental/>

HD Mesh Scenery v2 by alpilotx

Download: <http://www.alpilotx.net/downloads/x-plane-10-hd-scenery-mesh-v2/>

Europe Library von LyAvain,

Download: http://simheaven.com/?page_id=14

to see European instead of US buildings.

9. Credits

LAMINAR RESEARCH®

Ben Supnik

marginal

Philipp

X-Plane®

[WED](#) (Version 1.2.1r3 verwendet)

[Sketchup-Plugin](#)

Photos

10. Betatester-Team

all members of AXDG and Phillip.



Austrian X-Plane Design Group

11. License terms

This scenery is freeware and stays in the possession of the developer/s. Upon installation of the freeware the user accepts the terms of use. It is not allowed to upload the scenery or parts of it to other websites without the explicit permission in writing of the developer/s. Furthermore it is forbidden to use the scenery or parts of it on a commercial basis without the explicit permission in writing of the developer/s. Changes and modifications for the private use are allowed. But it is not allowed to share such changed or modified versions without the explicit written permission from the developer/s.

Apart from that the respective terms of copyright law are applicable.

The developer/s are not responsible for any malfunctions or possible failures of hard- or software in connection with this scenery. Under <http://forum.aerosoft.com/index.php?/forum/621-freeware/> the developer/s are available for questions or remarks regarding this scenery but cannot give the guarantee that this scenery will work on all computer systems.

Have fun with arrivals and departures in Ischgl, Idalpe

oe3gsu, Gerhard

